

VIKINGSHOLM

LAKE TAHOE





EMERALD BAY





VIKINGSHOLM SOON AFTER CONSTRUCTION





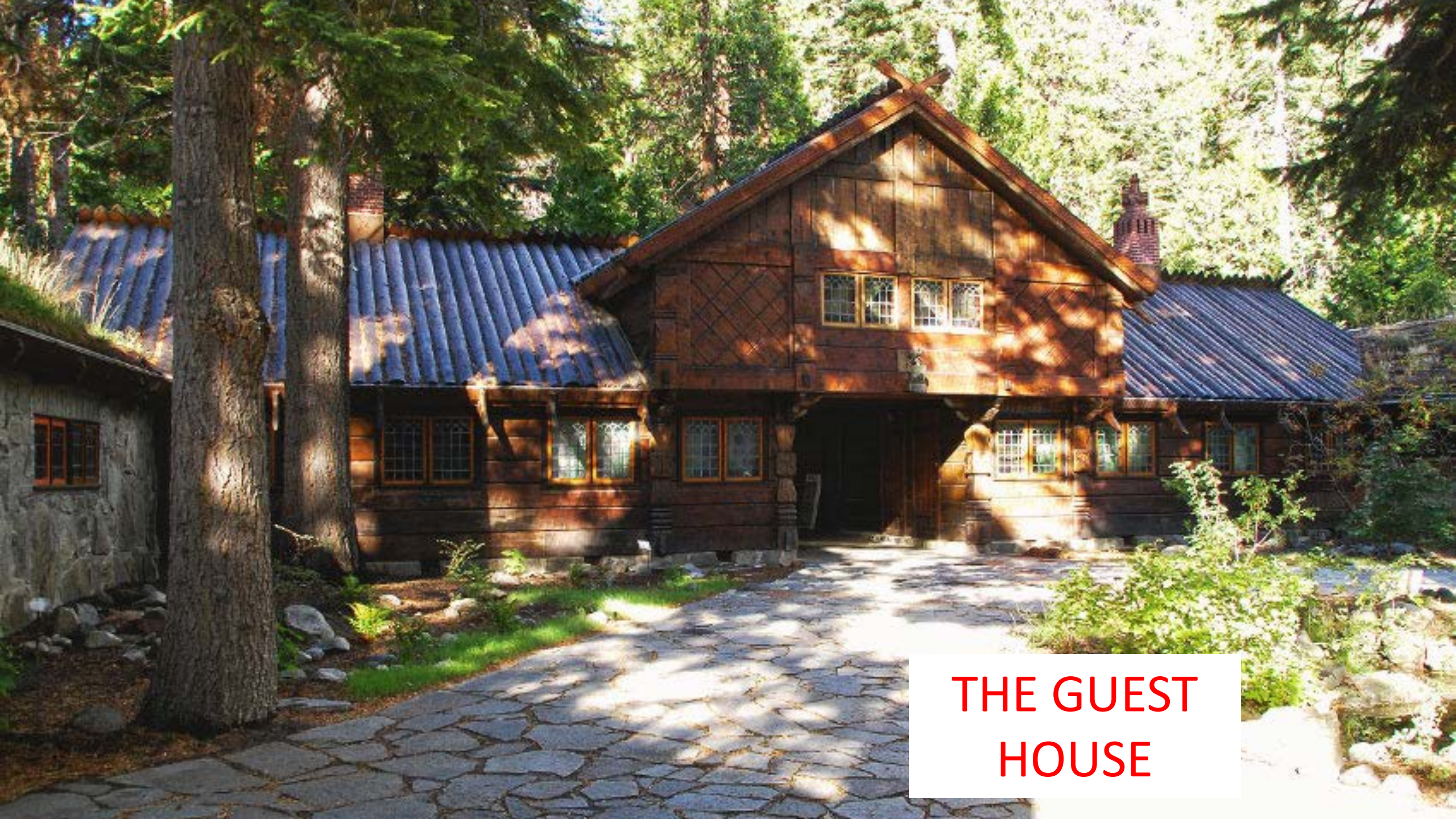












**THE GUEST
HOUSE**









SPIRIT OF ST. LOUIS.

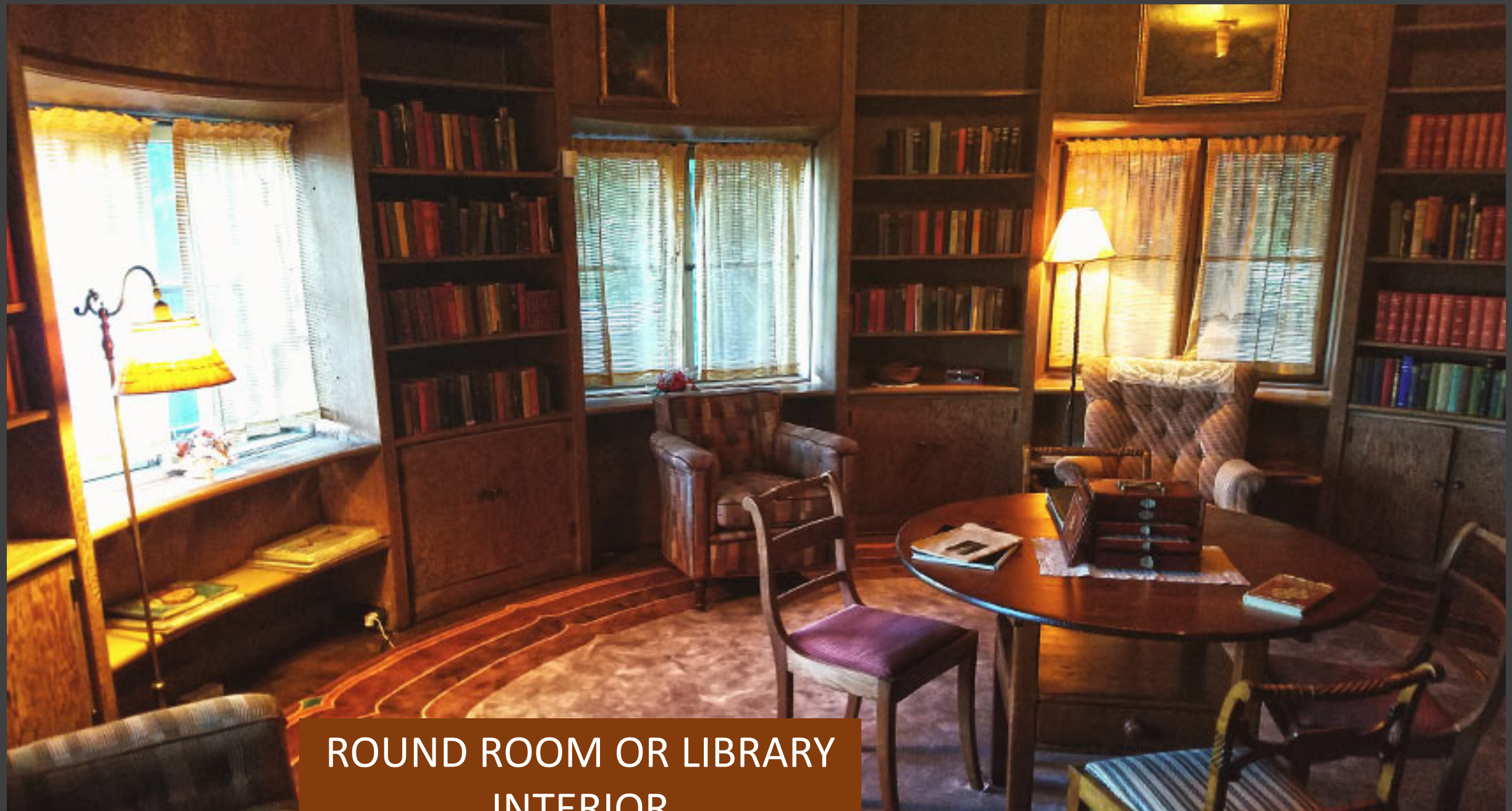
DINNER FOR CHARLES
LINDBERG AT VIKINGSHOLM

DINNER GIVEN FOR
COL CHARLES A. LINDBERGH

FANNETTE
ISLAND
STONE
STRUCTURE IS
LORA
KNIGHT'S TEA
ROOM







ROUND ROOM OR LIBRARY
INTERIOR



KITCHEN



LIVING ROOM





GUEST
ROOM





DINING ROOM



WRITING ROOM

Selma, the clock, is a Finnish piece of decor. The only break-in ever to occur at Vikingsholm resulted in the theft of Selma, the clock. It was never recovered, so in its place is a reproduction of the original.





PARKING FEE AREA

Harvey West Unit

Emerald Bay State Park

Vikingsholm

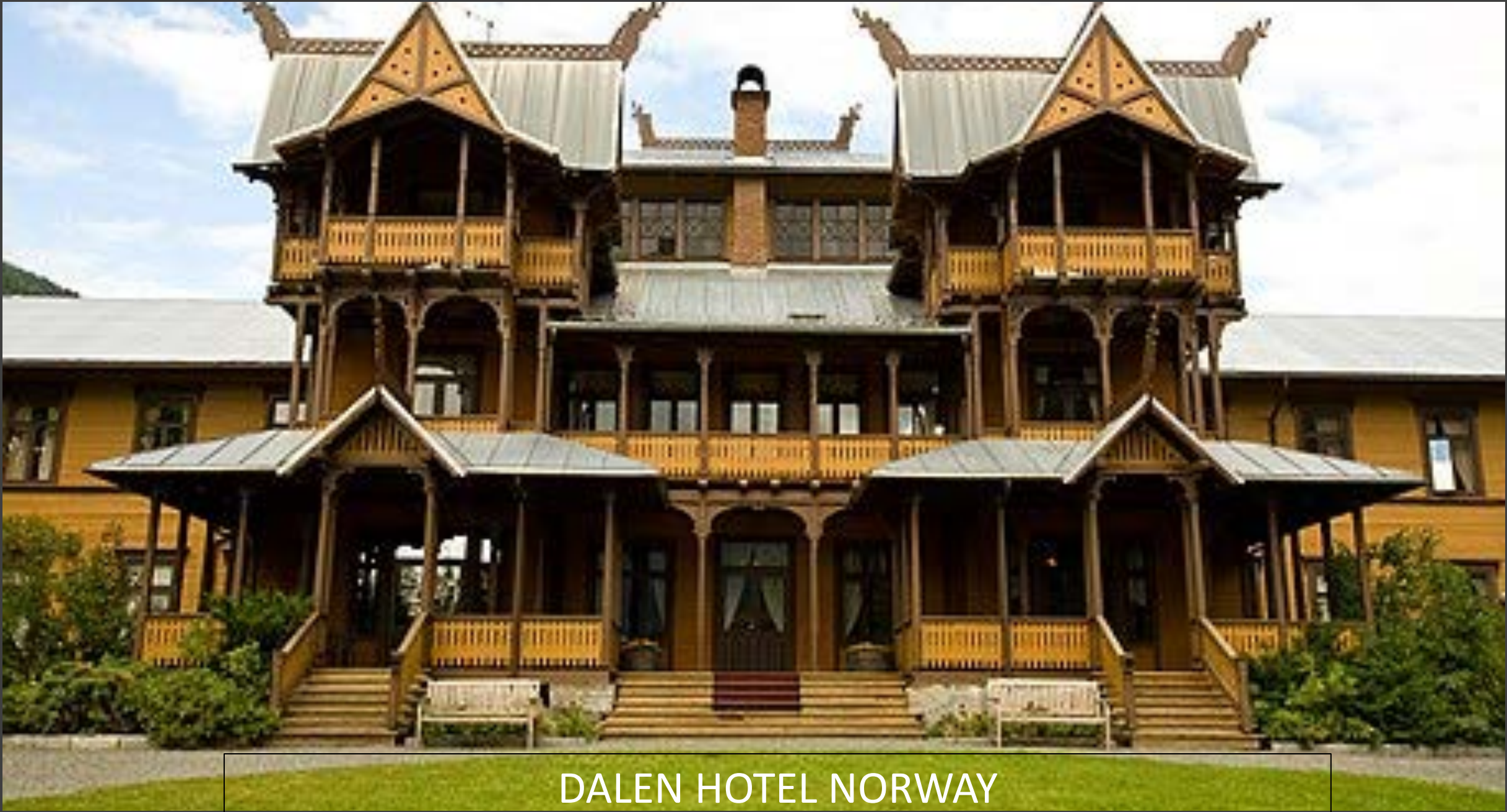
CALIFORNIA STATE PARKS



Dragestil ("Dragon Style") is a style of design and architecture that originated in Norway and was widely used principally between 1880 and 1910. It is a variant of the more embracing National Romantic style and an expression of Romantic nationalism.



HOME IN BALESTRAND
NORWAY



DALEN HOTEL NORWAY