

# More About The Coastal Retreat Center



**COVERED BACK DECK** — Perfect area for relaxing, quiet time or meeting space

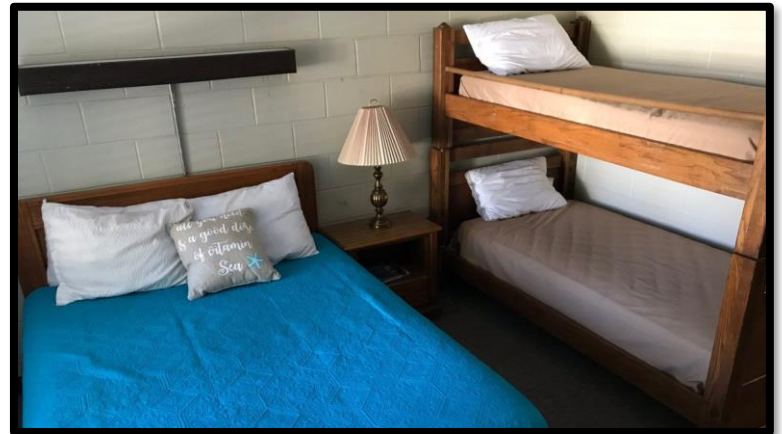


**Multiple Meeting/gathering Rooms**



**DOUBLE ROOMS**—Sleeps up to 4 people per room. 10 available.

**QUEEN AND TWIN BUNKS**—Sleeps up to 4 per room. 10 available.



**Kitchen and Dining Areas**

